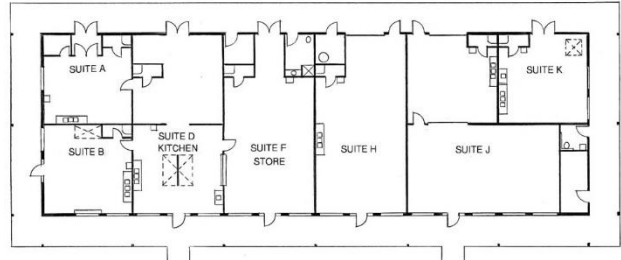
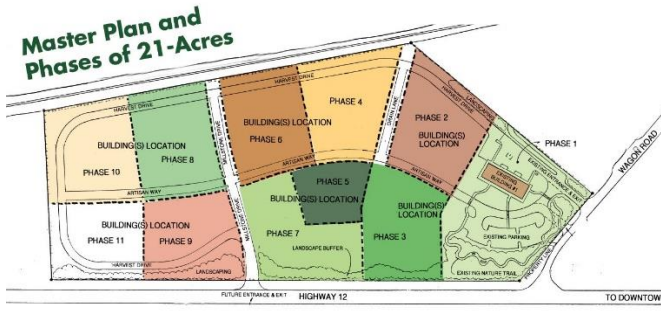


BLUE MOUNTAIN STATION



THE ARTISAN FOOD CENTER
AT BLUE MOUNTAIN STATION

SUITE B FOR LEASE – June 1, 2016

The Artisan Food Center is a multi-tenant building that houses 5 food processing spaces, a commercial kitchen, a small retail area, and a public restroom. All food processing spaces meet USDA and local health department standards. The building was constructed to LEED standards, with top-notch energy efficiency.

- 576 square feet
- Food-grade wall covering (FRP) to a height of 4 feet
- Stainless steel 3 compartment sink
- Stainless steel hood – no fire suppression
- Small pass-through “to go” sliding window
- Janitor’s closet with mop sink
- Floor drains
- Two windows and a glass entry door
- Second door leads directly to Artisan Food Center’s Commercial Kitchen
- Use of shared tenant restroom with shower and access to public restroom
- Use of commercial kitchen at reduced rate
- Opportunity to sell product in shared retail area
- **Lease rate - \$324.98 per month** (\$.50 per square foot plus 12.84% state leasehold tax) **plus utilities.**
- Electric Convection Commercial oven available for an additional \$40 per month

Contact the Port of Columbia at 509-382-2577 or email jennie@portofcolumbia.org for more information on leasing this space.